

WATERMAN
GRILLE



PROVIDENCE

1 PART WATERFRONT

2 PARTS TAPAS

A DASH OF RED BRICK

A PINCH OF NEW AMERICAN CUISINE



WELCOME

Set on the banks of Seekonk River in historical Richmond Square, Waterman Grille is influenced by the many cultures that are infused throughout Providence,

Waterman Grille's bistro-style menu features specialties from New England, Italy, Portugal, France and Native American cuisines, complemented by a boutique wine list featuring 60 wines from around the world. Choose from an extensive array of small plates featuring wood-fire grilled specialties and seasonal comfort food, coupled with the flavors of locally grown and organic produce.

An array of private dining rooms are available to accommodate your next event. From intimate gatherings to large cocktail events, Waterman Grille's unique location make it an ideal place to celebrate.



{ New American Cuisine on Providence's East Side }

PRIVATE DINING

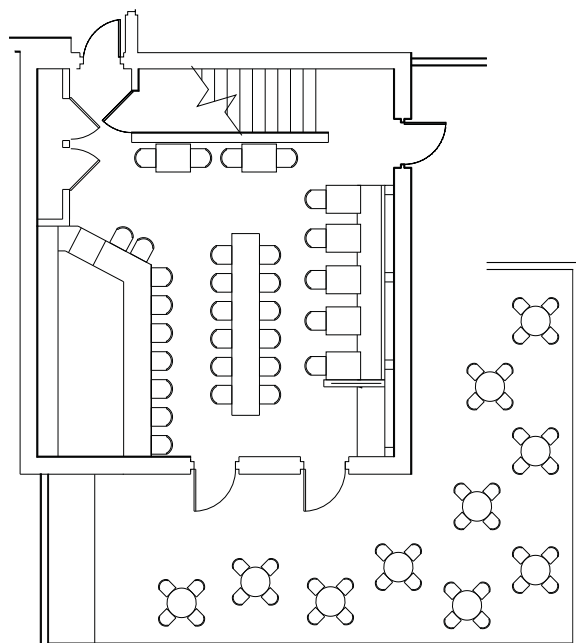




THE RIVERVIEW ROOM

A setting just as dramatic as it is romantic; the Riverview Room is the ideal space for wedding receptions, private parties or formal functions. Located on the lower level, the Riverview Room boasts spectacular views of the Seekonk River. Two sides of floor to ceiling windows drape the room providing stunning eye-level views of the water, while beautiful stone floors anchor the room. An abundance of natural light during the day and intimate lighting at night provides a welcoming atmosphere for any event.

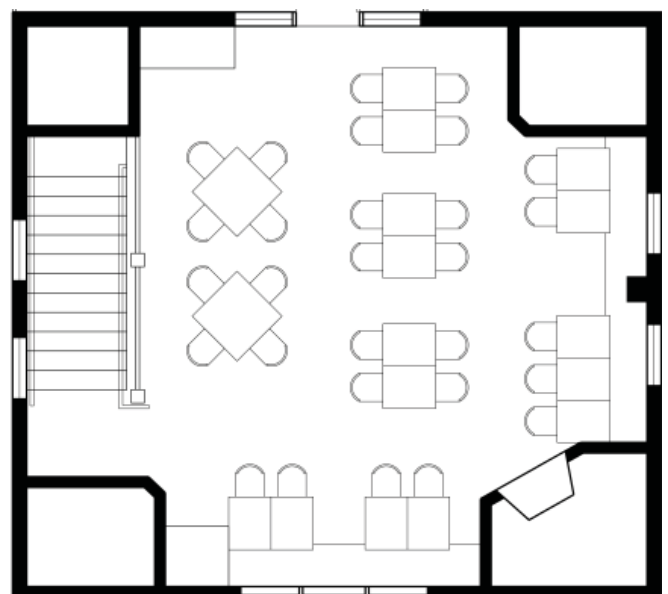
Our bar and lounge area is adjacent to the Riverview Room and is a perfect spot for cocktail receptions prior to dining. The room accommodates up to 100 guests and offers ample space for formal functions while still maintaining an intimate atmosphere.





THE LOFT

Located on the second floor of the restaurant, the Loft is a private, beautifully appointed room that is the perfect choice for groups up to 40 people. Rich colors blend seamlessly with natural accents of wood and white linens outfit the tables. The fireplace gives the room New England charm and creates an inviting atmosphere for guests. Perfect for small luncheons, receptions or dinner parties the Loft guarantees an elegant and intimate setting to any occasion.





THE BOARDROOM

Ideal for small dinner parties or corporate meetings, the Boardroom is the perfect space for any intimate occasion. The décor and atmosphere of the room can be tailored to create the ideal setting for a business luncheon or an intimate dinner party.


Located on the lower level of the building the Boardroom can accommodate groups with up to 25 guests. For outdoor cocktail parties, the Boardroom can be easily used in conjunction with the Patio, a perfect location prior to dining.



THE PATIO

A waterfront location rarely found in the Capitol City, the Patio is situated directly along the Seekonk River and boasts remarkable waterfront views that are sure to stun any guest. The open-air space is complimented by beautiful woods that anchor the floor, leading to a small canopied section overlooking the water.

This ideal location is perfect for private parties and can accommodate up to 40 guests for a sit-down event. For cocktail parties the Patio can hold groups up to 100 guests and is the perfect setting for your pre-dinner affair. Easily used in conjunction with the beautiful Riverdeck Room the Patio is an excellent way to begin your night.

A stylized, light-colored illustration of a house with a chimney and several windows, set against a dark background.

THANK YOU FOR YOUR
INTEREST IN WATERMAN GRILLE

For further information or to book your next
event, please contact our Sales Manager at

888-759-5557

watermangrille.com